

CONTENTS

KORDI, is with YOU!

**You can do whatever you want and be whoever you want!
Together with companies, performance agency,
and seniors, we make it happen.**

- Korea Labor Force Development Institute for the Aged -

Introduction **04**

06 History

Current Status &
Institute Chart **08**

10 Mission & Vision

Key Programs **12**

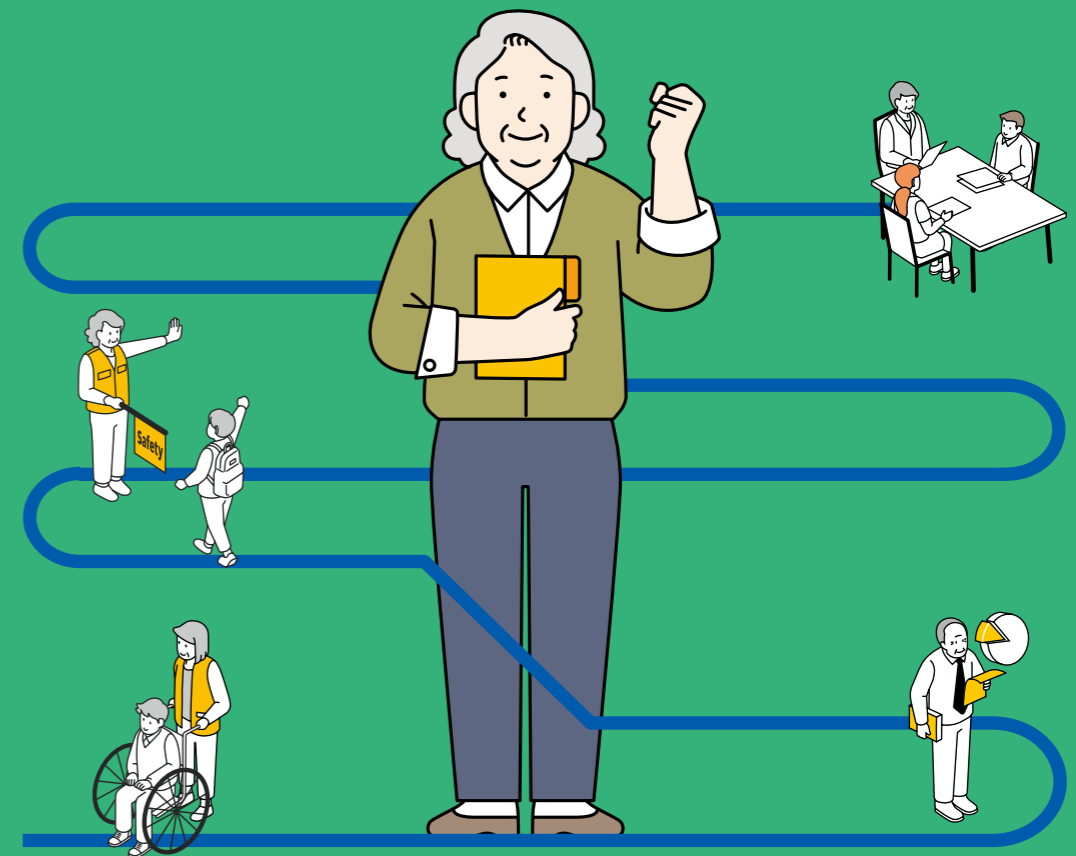
Private Sector **14**

Social Service **16**

Public Service **17**

Other Support Programs **18**



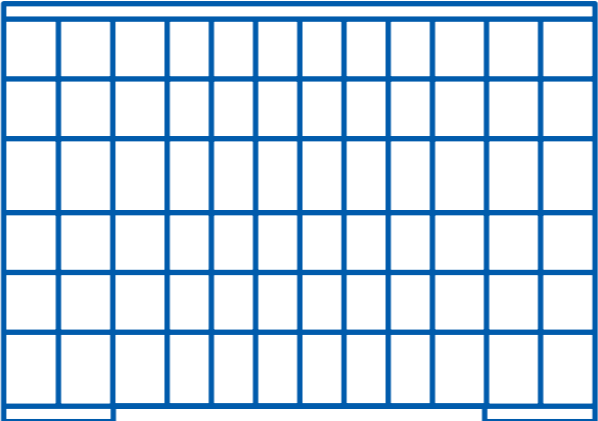




19 Online Community



We support the active senior life.

The Korea Labor Force Development Institute for the Aged (KORDI) is a quasi-government institute under the auspices of the Ministry of Health and Welfare that is dedicated to support programs for senior employment and social activity support programs.



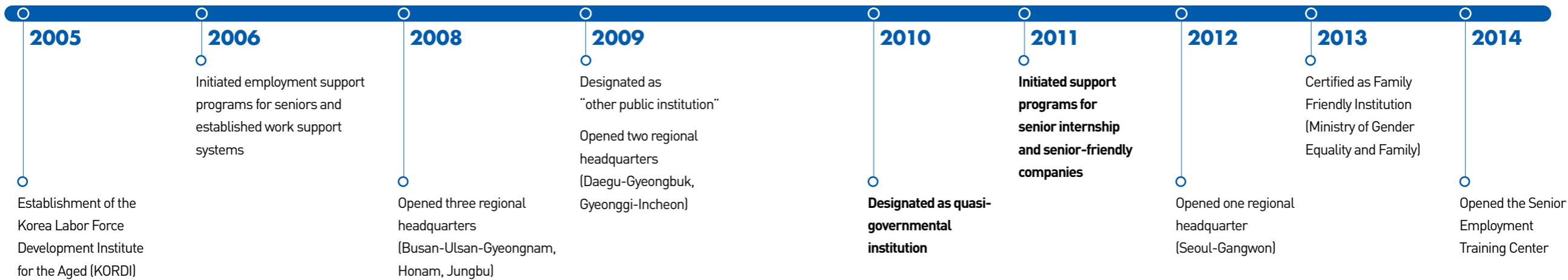
01 Overview	 Korea Labor Force Development Institute for the Aged (KORDI)	02 Key Results
Name of Institute	[Establishment Date] December 2005	Job Creation  845,000 jobs (target for 2022)
[Basis for Establishment] Article 23.2 of the Welfare of Senior Citizens Act		Institutes participating in senior employment  1,291
		Budget  1.44 trillion won (based on the 2022 national budget)
		Customer Satisfaction  Excellent (2020)
		Management Score  Grade B (2020)

The journey that KORDI has taken...

KORDI develops and supports jobs for senior citizens and educates, studies, and researches ways to utilize the senior workforce so that all citizens may enjoy an active and healthy aged life. Our aim is to create social value through employment for the elderly.

2005

2014

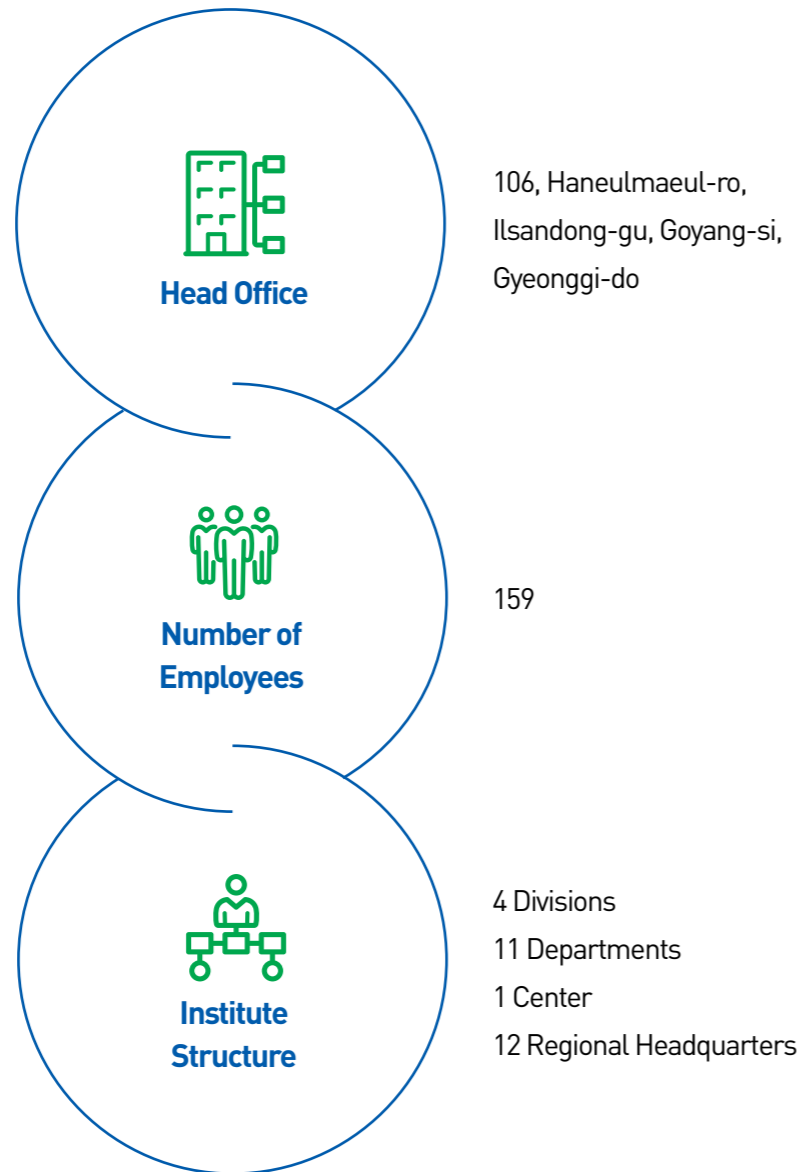


2015

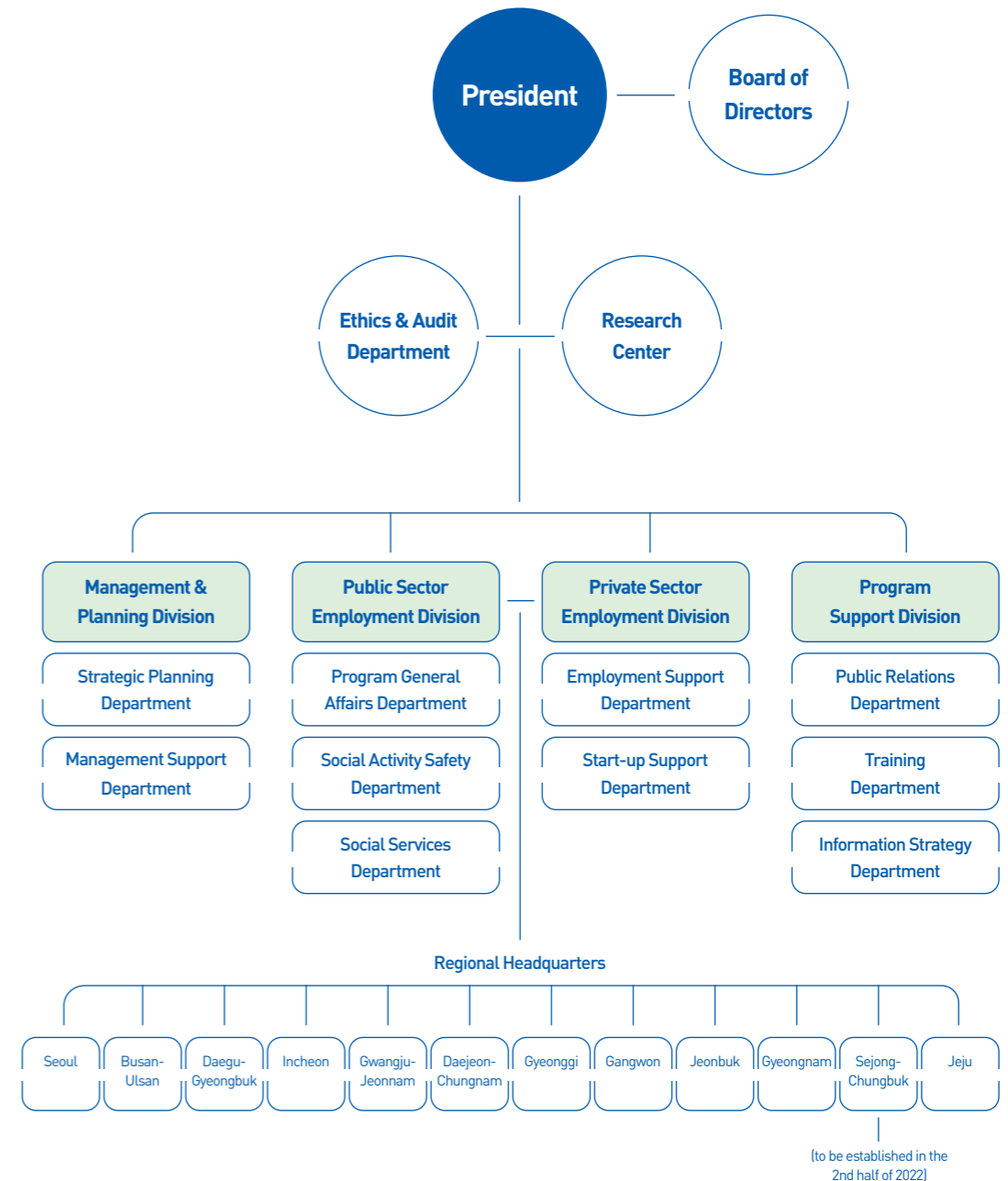
2022



Systematic and professional institute that supports program success.



KORDI supports programs for seniors so that their competencies can add value to businesses and the community. All employees at KORDI strive to support the skills of seniors to create more customized jobs for seniors suited to the demands of businesses and the community.



Introducing our mission and vision that supports an active tomorrow.

KORDI's mission and vision is to support the utilization of the skills of the entire 10 million senior citizen population, and to achieve this, meticulous plans are established and executed.

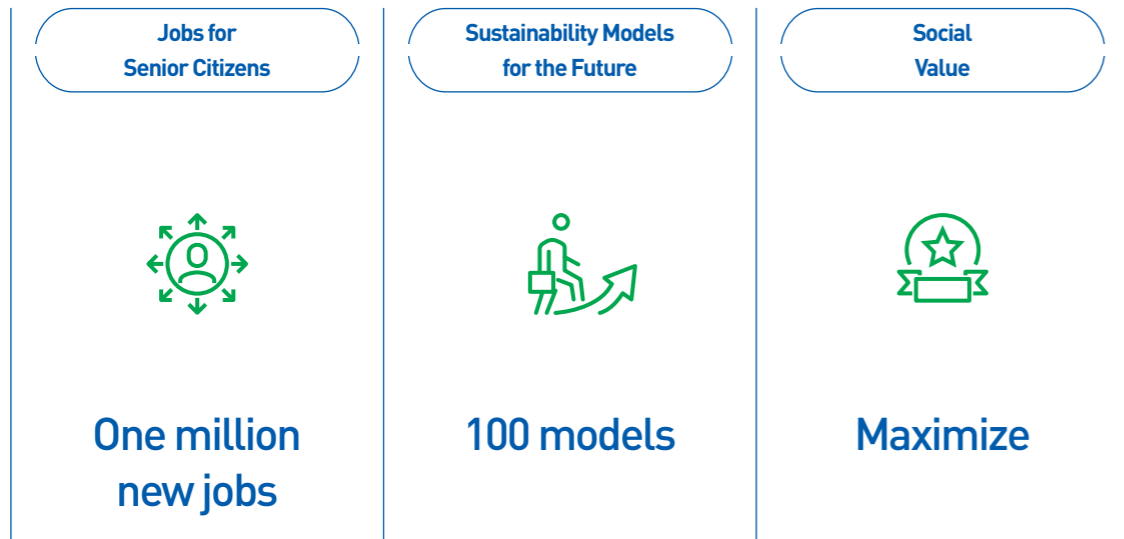
MISSION

Create a active aging society through SESAP.

Management Principles



Management Goals



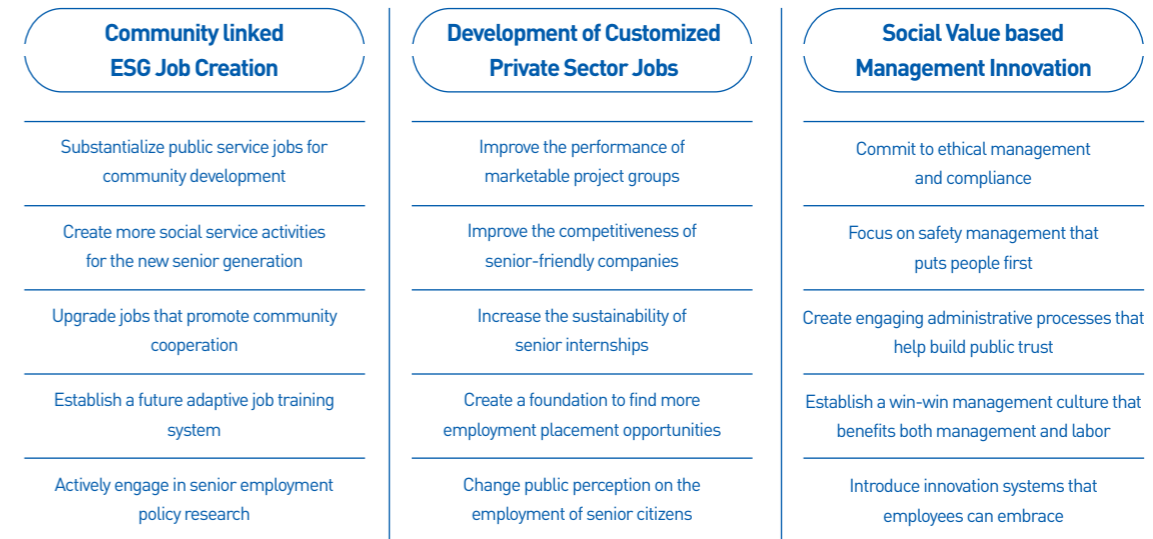
VISION

To become a leading institute that creates one million new jobs for seniors in the era of a population of 10 million senior citizens.

Core Values



Strategic Goals and Tasks



Introducing Senior Employment and Social Activity Support Programs for the Elderly

Together with You

KORDI supports you so that your skills may shine and add value, and helps senior citizens contribute to society through their competencies.



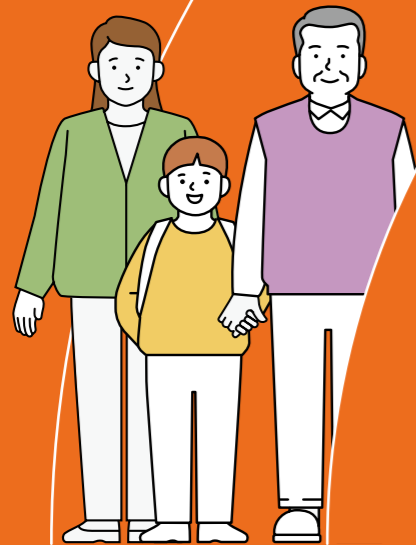
Right Next to You

KORDI develops and offers various employment opportunities. In this way, seniors can be connected with the local community and contribute their experience to businesses, the community, and performing institution.



Always Behind You

KORDI works hard to create jobs that reflect the demands of the community, performance agency, and people.



BUSINESS INDEX

1 Private Sector

- Senior internship
- Senior-friendly company
- Marketable project group
- Employment placement

2 Social Service

- Social service activities
- Social service leading model

3 Public Service

- Public service activities

4 Other Support Programs

- Training for senior employment
- Employment and start-up support program
- Research and study activities
- Policy promotion and public relations
- Operation of a senior employment work system

Together with businesses

Private Sector

By supporting companies and projects that employ senior citizens, KORDI creates more private sector employment opportunities for the elderly.



Senior Internship

Definition Program that offers labor cost support to companies that hire workers above the age of 60 to facilitate new and continuous employment of seniors.

Eligibility **Participating companies** : Companies or non-profit institutes that subscribe to the four major social insurance schemes and comply with worker protection regulations.
Participants : 60 and above

Support Details Participating companies or institutes can receive up to 2.4 million won per person for a period of six months
An additional subsidy of 900,000 won is provided if long-term employment is maintained (18 months or more).

Senior-friendly Company

Definition Program that offers subsidy to companies that plan to hire a large number of senior citizens in suitable positions where they can have a competitive edge.

Eligibility **Participating companies** : Companies that currently employ a large number of senior citizens and plan to employ more, or companies and institutes that will establish new businesses that will employ a large number of senior citizens.
Participants : 60 and above

Support Details Subsidy of up to 300 million won and management consulting

Marketable Project Group

Definition Activities that create jobs by jointly operating small stores and specialized business groups in businesses suitable for senior citizens.

Eligibility 60 and above

Work Details Food manufacturing & sales, industrial manufacturing & sales, store operation, local farming, transportation, etc.

Work Hours / According to employment contract

Wage

Employment Placement

Definition Program that connects senior citizens who have completed certain training or are equipped with specific work capabilities to companies where they can receive a fixed wage for their work period.

Eligibility 60 and above

Work Details Proctor, gas station worker, security guard, office clerk, etc.

Work Hours / According to employment contract

Wage

Sharing experience and expertise

Social Service

KORDI helps seniors share their expertise and experience in areas that need social care.

Share your experience with society



Contributing to the local community

Public Service

Creating a healthy and vibrant life after retirement by supporting the continuous participation of seniors in social activities.

Sharing greater happiness with all



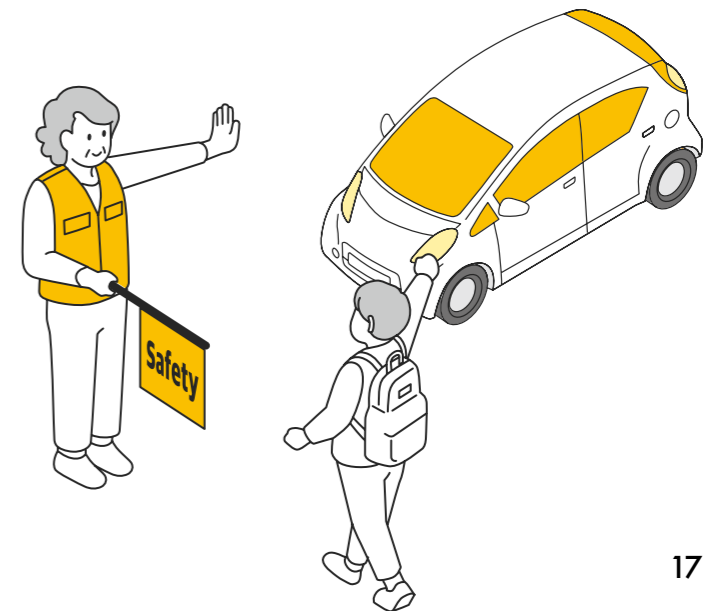
Definition	Jobs that provide services in areas that need social assistance using the experience and capabilities of senior citizens.
Eligibility	65 and above (for some specific positions, 60 and above may be allowed)
Work Details	Family and intergenerational services, specialized services for the underprivileged, public professional services, senior employment and social activities support
Work Hours	Monthly 60 hours
Wage	Monthly 710,000 won



Definition	Volunteer activities that senior citizens participate in to improve their sense of self and accomplishment, and also to promote the public interests of their local communities.
Eligibility	Basic pension beneficiaries (65 and above)
Activity Details	Elderly-to-elderly care, support for the underprivileged, public facilities volunteering, experience sharing, mutual community
Activity Hours	Monthly 30 hours or more (less than 3 hours a day)
Wage	Monthly 270,000 won



Definition	Jobs tailored to the new senior generation in the social service sector using external resources (human, material resources)
Eligibility	60 and above
Support Details	Per capita subsidy of up to 320,000 won x 5 months for participating companies or institutes (maximum 1.6 million won annually per person)



For the systematic operation of senior employment

Other Support Programs

Training and business support, research activities, and policy public relations are pursued to enable the sustainable growth of senior employment.



Training for Senior Employment

Participant training : The development of training material and content to provide senior citizens with the necessary knowledge to participate in programs and to strengthen their job competency (online and offline training support).

Worker training : The identification of basic skills necessary for senior employment program workers and the development and operation of a customized training curriculum.

Employment and Start-up Support Program

Comprehensive management services support to increase the market competitiveness of marketable project groups and senior-friendly companies.

Research and Study Activities

Analysis of senior employment situations in Korea and abroad and engagement in the research and study of various senior employment policies and schemes.

Policy Promotion and Public Relations

Promote senior employment policies and create a positive perception of working seniors.

Operation of a Senior Employment Work System

Manage and operate a work system to efficiently execute support programs for the employment and social activities of seniors.

Click and search easily for senior employment opportunities

Online Community

KORDI provides information on senior employment through various online communities.

Website

Korea Labor Force Development Institute for the Aged (KORDI)
www.kordi.or.kr



Senior Employment Yeogi
www.seniorro.or.kr






Social Media



YouTube
www.youtube.com/user/kordinoin



Blog
blog.naver.com/kordi_seniorjob



Facebook
www.facebook.com/kordiseniorjob



Instagram
www.instagram.com/kordi_kr



KORDI — NETWORK

KORDI is with you at your location.

Head Office

106, Haneulmaeul-ro, Ilsandong-gu,
Goyang-si, Gyeonggi-do
☎ +82-31-8035-7511

Incheon Regional Headquarters

Geunyeong Plaza 10th Floor, 641, Gilju-ro,
Bupyeong-gu, Incheon
☎ +82-70-8858-8908

Sejong-Chungbuk

Regional Headquarters
To be established in
the second half of 2022

Daejeon-Chungnam

Regional Headquarters
Ian Bldg. 7th floor, 152, Cheongsa-ro,
Seo-gu, Daejeon
☎ +82-42-476-9893

Jeonbuk Regional Headquarters

KT Bldg. 1st Floor, 29, Ongoeul-ro,
Wansan-gu, Jeonju-si, Jeollabuk-do
☎ +82-63-251-0212

Gwangju-Jeonnam

Regional Headquarters
SRB Bldg. 6th floor, 324, Jebong-ro,
Buk-gu, Gwangju
☎ +82-62-365-8815

Jeju Regional Headquarters

Beopjo Tower 5th floor, 1,
Namgwangbuk 1-gil, Jeju-si, Jeju
☎ +82-64-805-3079

Gangwon Regional Headquarters

Kia Motors Bldg. 3rd floor, 2360,
Gyeongchun-ro, Chuncheon-si,
Gangwon-do
☎ +82-33-911-3016

Seoul Regional Headquarters

Wise Tower 19th Floor, 17,
Sejongdae-ro, Jung-gu, Seoul
☎ +82-2-6203-0964

Gyeonggi Regional Headquarters

Gwanggyo Hinity Bldg. 3rd floor, 16,
Edutown-ro 106 beon-gil, Yeongtong-gu,
Suwon-si, Gyeonggi-do
☎ +82-70-4861-6504

Daegu-Gyeongbuk

Regional Headquarters
Daegu Venture Center 3rd floor,
Daegu Techno Park, 475, Dongdaegu-ro,
Dong-gu, Daegu
☎ +82-53-759-1900

Busan-Ulsan Regional Headquarters

Juseongsan Bldg. 3rd floor, 295,
Geojedae-ro, Yeonje-gu, Busan
☎ +82-51-507-6373

Gyeongnam Regional Headquarters

Haegeum Science Town 6th floor, 24,
Yongdong-ro 57 beon-gil, Euichang-gu,
Changwon-si, Gyeongsangnam-do
☎ +82-70-4372-3035